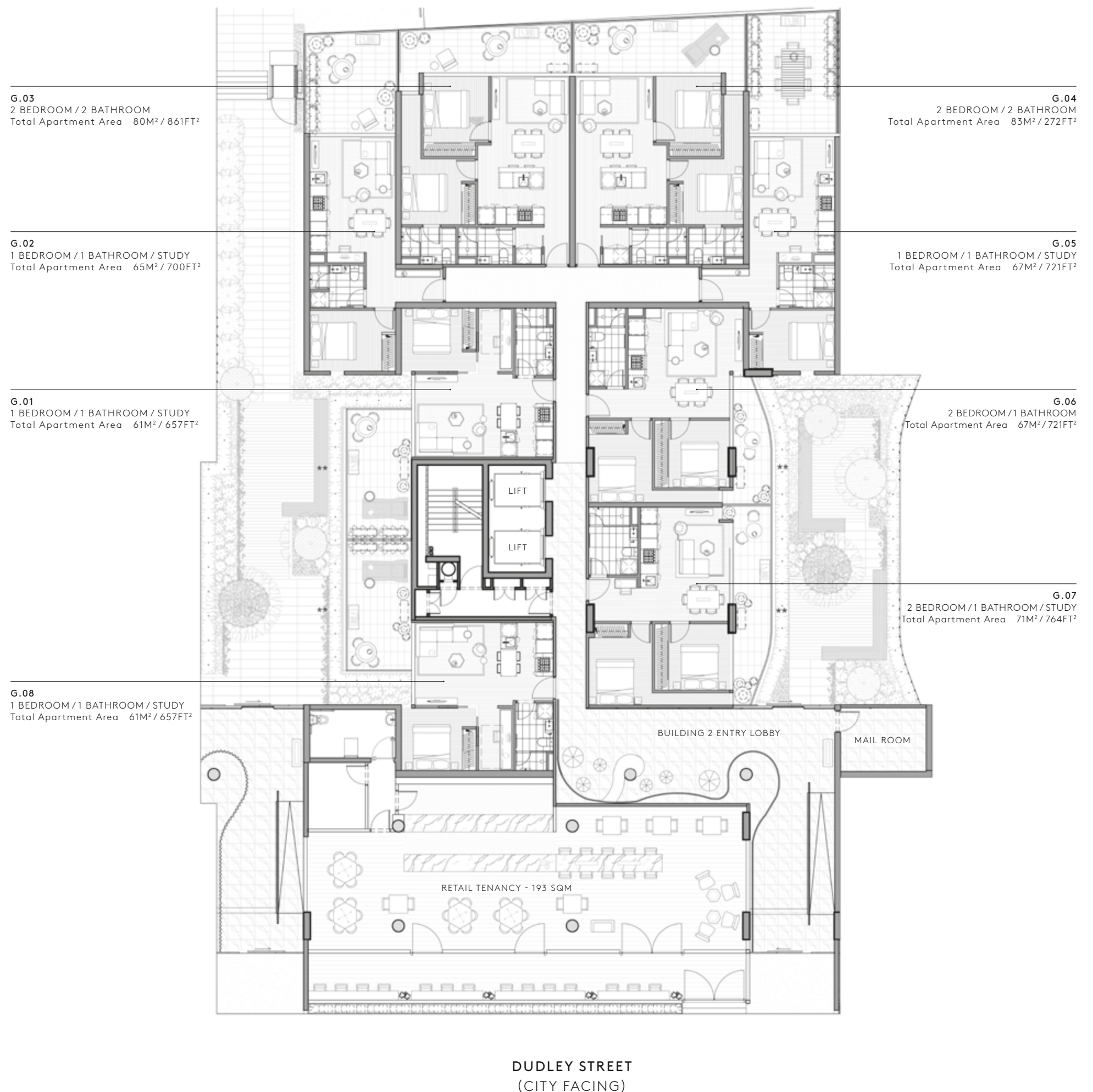


Ground Level

I K E B A N A

KESHI

(NORTH FACING)



Not to scale.
All dimensions are approximate.
Floorboard upgrade shown. All internal/external furniture (including study desks and planter boxes) and whitegoods are not included.
** Privacy Screening – refer to contract of sale.

DISCLAIMER
Any dimensions, layout, design features, views, areas, images, photographs and artist's impressions are for presentation purposes and indicative only. They are also subject to change in accordance with the contract of sale. All area calculations are based on the Property Council of Australia method of measurement guidelines and are estimates only. Any dimensions or areas may differ from surveyed areas due to different methods of measurement. Final product may differ from that described. Purchasers should check the plans and specifications included in the contract of sale carefully prior to signing the contract of sale.

Level One

I K E B A N A

KESHI

(NORTH FACING)

1.03
2 BEDROOM / 2 BATHROOM
Total Apartment Area 78M² / 840FT²

1.04
2 BEDROOM / 2 BATHROOM
Total Apartment Area 78M² / 840FT²

1.02
1 BEDROOM / 1 BATHROOM / STUDY
Total Apartment Area 54M² / 581FT²

1.05
1 BEDROOM / 1 BATHROOM / STUDY
Total Apartment Area 54M² / 581FT²

1.01
1 BEDROOM / 1 BATHROOM / STUDY
Total Apartment Area 52M² / 560FT²

1.06
1 BEDROOM / 1 BATHROOM / STUDY
Total Apartment Area 52M² / 560FT²

1.07
1 BEDROOM / 1 BATHROOM / STUDY
Total Apartment Area 51M² / 549FT²

1.13
1 BEDROOM / 1 BATHROOM / STUDY
Total Apartment Area 52M² / 560FT²

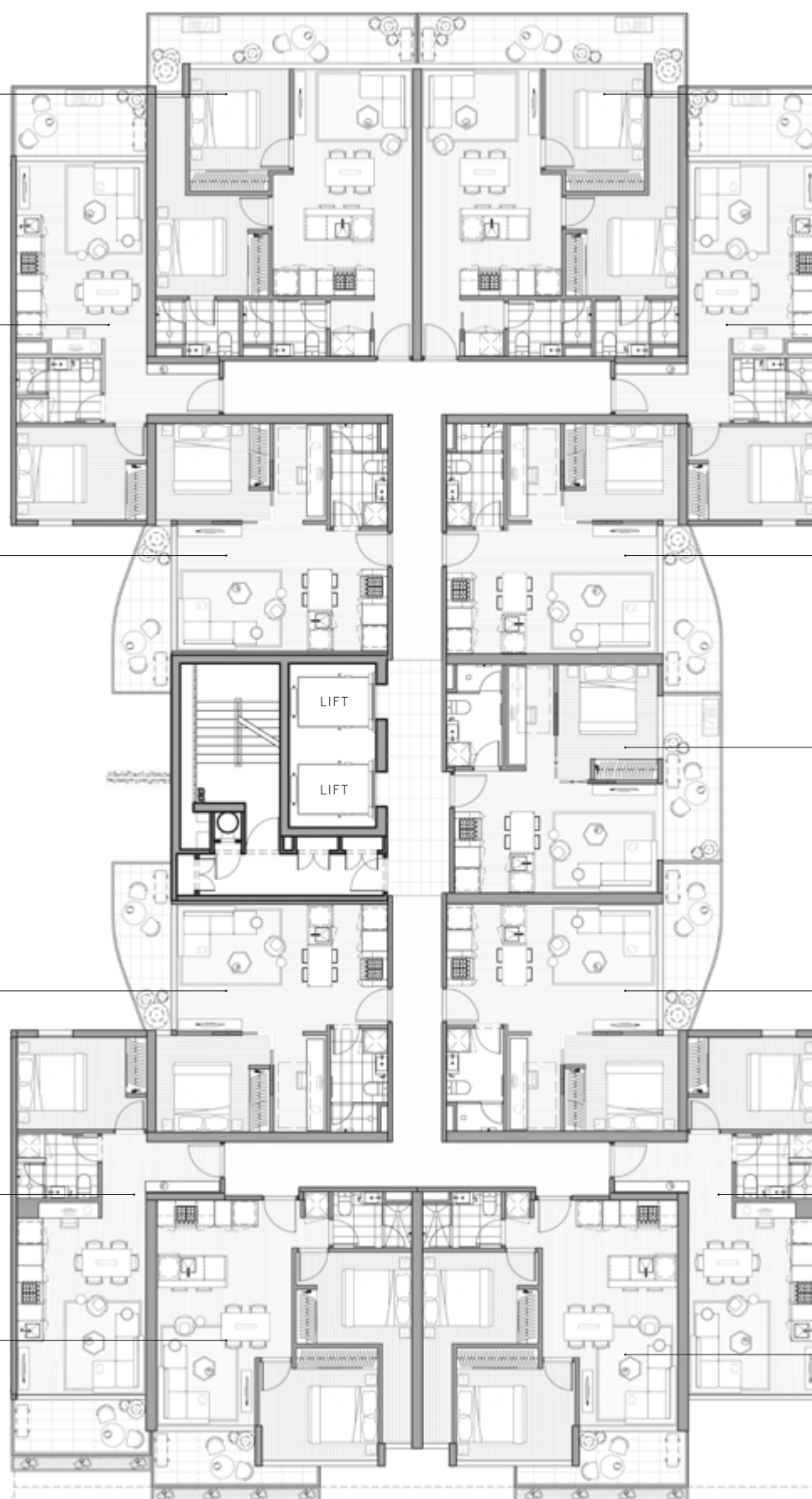
1.08
1 BEDROOM / 1 BATHROOM / STUDY
Total Apartment Area 52M² / 560FT²

1.12
1 BEDROOM / 1 BATHROOM / STUDY
Total Apartment Area 54M² / 581FT²

1.09
1 BEDROOM / 1 BATHROOM / STUDY
Total Apartment Area 46M² / 495FT²

1.11
2 BEDROOM / 1 BATHROOM
Total Apartment Area 64M² / 689FT²

1.10
2 BEDROOM / 1 BATHROOM
Total Apartment Area 64M² / 689FT²



DUDLEY STREET
(CITY FACING)

Not to scale.
All dimensions are approximate.
Floorboard upgrade shown. All internal/external
furniture (including study desks and planter boxes)
and whitegoods are not included.
** Privacy Screening – refer to contract of sale.

DISCLAIMER

Any dimensions, layout, design features, views, areas, images, photographs and artist's impressions are for presentation purposes and indicative only. They are also subject to change in accordance with the contract of sale. All area calculations are based on the Property Council of Australia method of measurement guidelines and are estimates only. Any dimensions or areas may differ from surveyed areas due to different methods of measurement. Final product may differ from that described. Purchasers should check the plans and specifications included in the contract of sale carefully prior to signing the contract of sale.

Level Two

I K E B A N A

KESHI

(NORTH FACING)

2.03
2 BEDROOM / 2 BATHROOM
Total Apartment Area 78M² / 840FT²

2.04
2 BEDROOM / 2 BATHROOM
Total Apartment Area 78M² / 840FT²

2.02
1 BEDROOM / 1 BATHROOM / STUDY
Total Apartment Area 54M² / 581FT²

2.05
1 BEDROOM / 1 BATHROOM / STUDY
Total Apartment Area 54M² / 581FT²

2.01
1 BEDROOM / 1 BATHROOM / STUDY
Total Apartment Area 52M² / 560FT²

2.06
1 BEDROOM / 1 BATHROOM / STUDY
Total Apartment Area 52M² / 560FT²

2.07
1 BEDROOM / 1 BATHROOM / STUDY
Total Apartment Area 51M² / 549FT²

2.13
1 BEDROOM / 1 BATHROOM / STUDY
Total Apartment Area 52M² / 560FT²

2.08
1 BEDROOM / 1 BATHROOM / STUDY
Total Apartment Area 52M² / 560FT²

2.12
1 BEDROOM / 1 BATHROOM / STUDY
Total Apartment Area 54M² / 581FT²

2.09
1 BEDROOM / 1 BATHROOM / STUDY
Total Apartment Area 54M² / 581FT²

2.11
2 BEDROOM / 1 BATHROOM
Total Apartment Area 64M² / 689FT²

2.10
2 BEDROOM / 1 BATHROOM
Total Apartment Area 64M² / 689FT²



DUDLEY STREET
(CITY FACING)

Not to scale.
All dimensions are approximate.
Floorboard upgrade shown. All internal/external
furniture (including study desks and planter boxes)
and whitegoods are not included.
** Privacy Screening – refer to contract of sale.

DISCLAIMER

Any dimensions, layout, design features, views, areas, images, photographs and artist's impressions are for presentation purposes and indicative only. They are also subject to change in accordance with the contract of sale. All area calculations are based on the Property Council of Australia method of measurement guidelines and are estimates only. Any dimensions or areas may differ from surveyed areas due to different methods of measurement. Final product may differ from that described. Purchasers should check the plans and specifications included in the contract of sale carefully prior to signing the contract of sale.

Level Three

I KEBANA

KESHI

(NORTH FACING)

3.03
2 BEDROOM / 2 BATHROOM
Total Apartment Area 78M² / 840FT²

3.04
2 BEDROOM / 2 BATHROOM
Total Apartment Area 78M² / 840FT²

3.02
1 BEDROOM / 1 BATHROOM / STUDY
Total Apartment Area 54M² / 581FT²

3.05
1 BEDROOM / 1 BATHROOM / STUDY
Total Apartment Area 54M² / 581FT²

3.01
1 BEDROOM / 1 BATHROOM / STUDY
Total Apartment Area 52M² / 560FT²

3.06
1 BEDROOM / 1 BATHROOM / STUDY
Total Apartment Area 52M² / 560FT²

3.07
1 BEDROOM / 1 BATHROOM / STUDY
Total Apartment Area 51M² / 549FT²

3.13
1 BEDROOM / 1 BATHROOM / STUDY
Total Apartment Area 52M² / 560FT²

3.08
1 BEDROOM / 1 BATHROOM / STUDY
Total Apartment Area 52M² / 560FT²

3.12
1 BEDROOM / 1 BATHROOM / STUDY
Total Apartment Area 54M² / 581FT²

3.09
1 BEDROOM / 1 BATHROOM / STUDY
Total Apartment Area 54M² / 581FT²

3.11
2 BEDROOM / 1 BATHROOM
Total Apartment Area 64M² / 689FT²

3.10
2 BEDROOM / 1 BATHROOM
Total Apartment Area 64M² / 689FT²

DUDLEY STREET
(CITY FACING)

Not to scale.
All dimensions are approximate.
Floorboard upgrade shown. All internal/external
furniture (including study desks and planter boxes)
and whitegoods are not included.
** Privacy Screening – refer to contract of sale.

DISCLAIMER

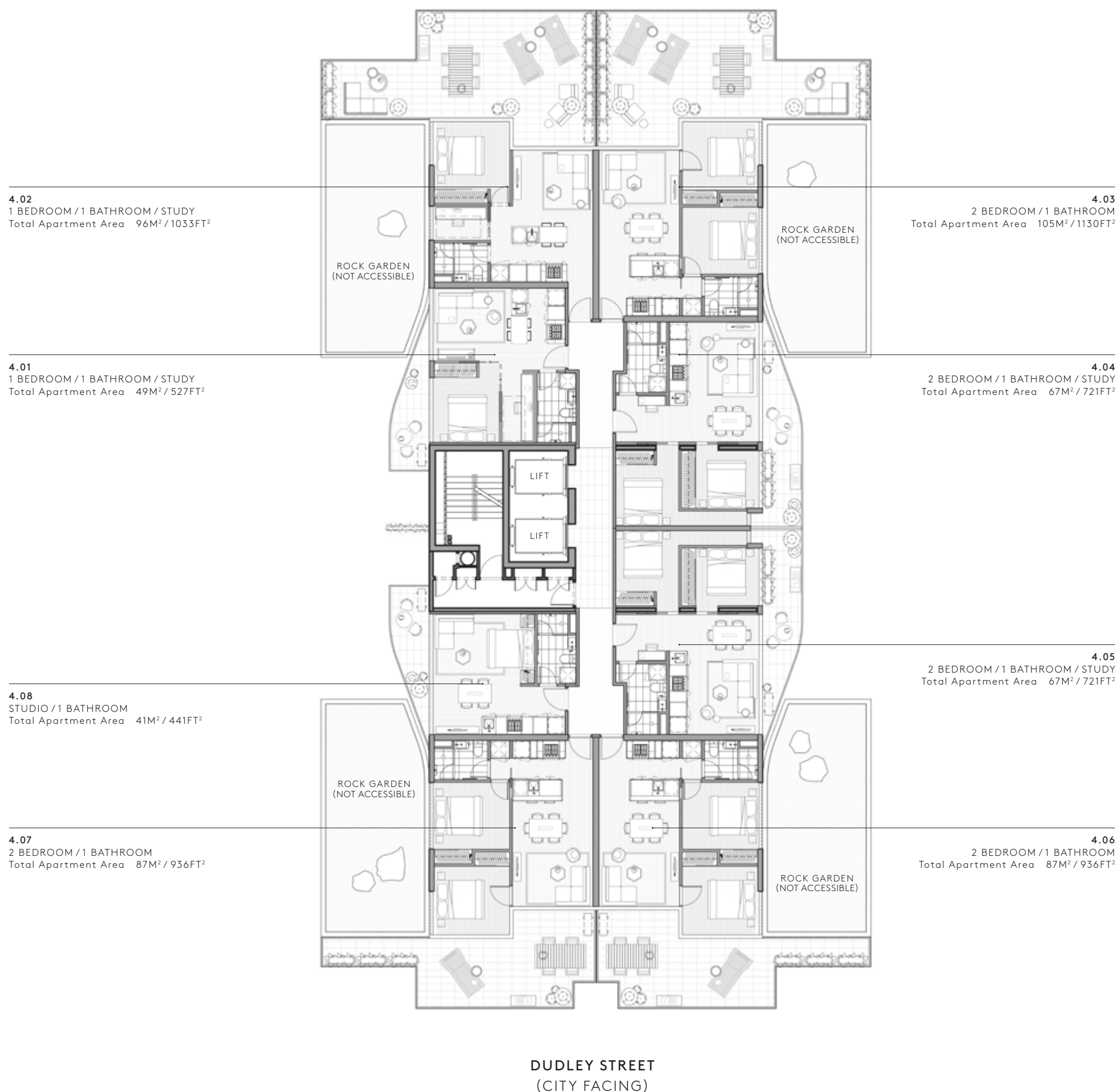
Any dimensions, layout, design features, views, areas, images, photographs and artist's impressions are for presentation purposes and indicative only. They are also subject to change in accordance with the contract of sale. All area calculations are based on the Property Council of Australia method of measurement guidelines and are estimates only. Any dimensions or areas may differ from surveyed areas due to different methods of measurement. Final product may differ from that described. Purchasers should check the plans and specifications included in the contract of sale carefully prior to signing the contract of sale.

Level Four

I K E B A N A

KESHI

(NORTH FACING)



Not to scale.
All dimensions are approximate.
Floorboard upgrade shown. All internal/external furniture (including study desks and planter boxes) and whitegoods are not included.
** Privacy Screening – refer to contract of sale.

DISCLAIMER

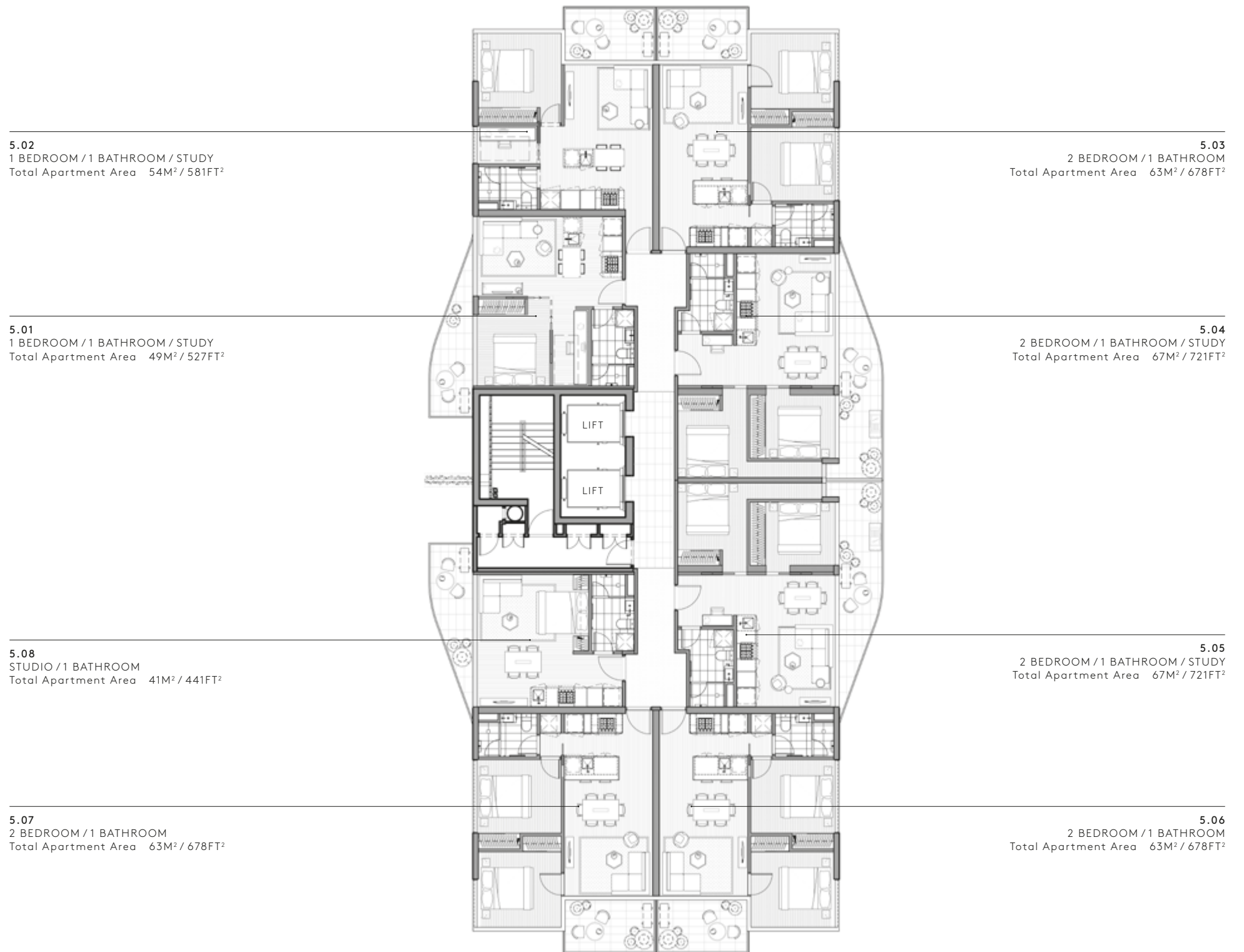
Any dimensions, layout, design features, views, areas, images, photographs and artist's impressions are for presentation purposes and indicative only. They are also subject to change in accordance with the contract of sale. All area calculations are based on the Property Council of Australia method of measurement guidelines and are estimates only. Any dimensions or areas may differ from surveyed areas due to different methods of measurement. Final product may differ from that described. Purchasers should check the plans and specifications included in the contract of sale carefully prior to signing the contract of sale.

Level Five

I K E B A N A

KESHI

(NORTH FACING)



DUDLEY STREET
(CITY FACING)

Not to scale.
All dimensions are approximate.
Floorboard upgrade shown. All internal/external
furniture (including study desks and planter boxes)
and whitegoods are not included.
** Privacy Screening – refer to contract of sale.

DISCLAIMER

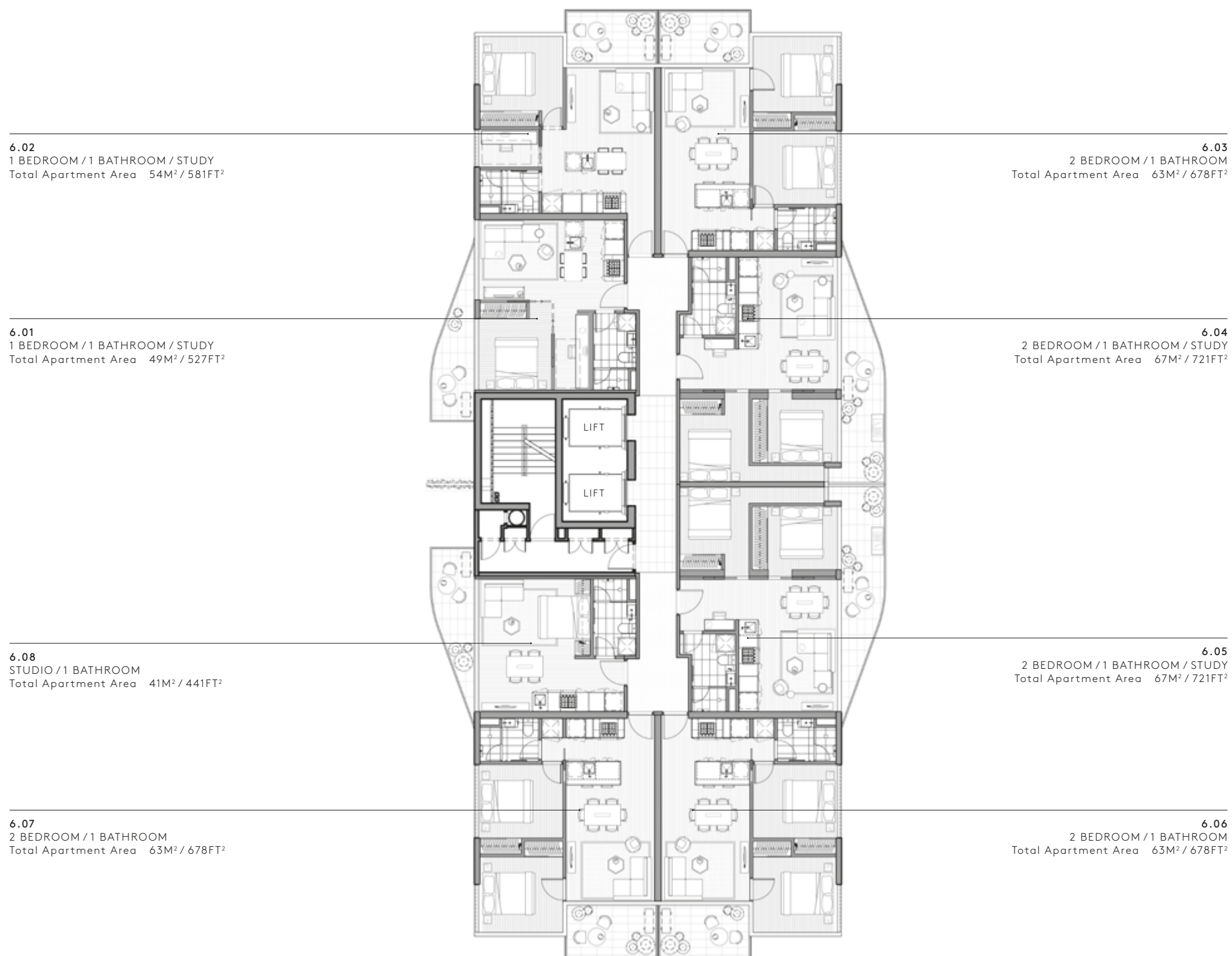
Any dimensions, layout, design features, views, areas, images, photographs
and artist's impressions are for presentation purposes and indicative only.
They are also subject to change in accordance with the contract of sale.
All area calculations are based on the Property Council of Australia method
of measurement guidelines and are estimates only. Any dimensions or areas
may differ from surveyed areas due to different methods of measurement.
Final product may differ from that described. Purchasers should check the
plans and specifications included in the contract of sale carefully prior to
signing the contract of sale.

Level Six

I K E B A N A

KESHI

(NORTH FACING)



DUDLEY STREET
(CITY FACING)

Not to scale.
All dimensions are approximate.
Floorboard upgrade shown. All internal/external furniture (including study desks and planter boxes) and whitegoods are not included.
** Privacy Screening – refer to contract of sale.

DISCLAIMER

Any dimensions, layout, design features, views, areas, images, photographs and artist's impressions are for presentation purposes and indicative only. They are also subject to change in accordance with the contract of sale. All area calculations are based on the Property Council of Australia method of measurement guidelines and are estimates only. Any dimensions or areas may differ from surveyed areas due to different methods of measurement. Final product may differ from that described. Purchasers should check the plans and specifications included in the contract of sale carefully prior to signing the contract of sale.

Level Seven

I K E B A N A

KESHI

(NORTH FACING)



DUDLEY STREET
(CITY FACING)

Not to scale.
All dimensions are approximate.
Floorboard upgrade shown. All internal/external
furniture (including study desks and planter boxes)
and whitegoods are not included.
** Privacy Screening – refer to contract of sale.

DISCLAIMER

Any dimensions, layout, design features, views, areas, images, photographs
and artist's impressions are for presentation purposes and indicative only.
They are also subject to change in accordance with the contract of sale.
All area calculations are based on the Property Council of Australia method
of measurement guidelines and are estimates only. Any dimensions or areas
may differ from surveyed areas due to different methods of measurement.
Final product may differ from that described. Purchasers should check the
plans and specifications included in the contract of sale carefully prior to
signing the contract of sale.

Level Eight

I K E B A N A

KESHI

(NORTH FACING)

8.02
1 BEDROOM / 1 BATHROOM / STUDY
Total Apartment Area 54M² / 581FT²

8.01
1 BEDROOM / 1 BATHROOM / STUDY
Total Apartment Area 49M² / 527FT²

8.07
STUDIO / 1 BATHROOM
Total Apartment Area 41M² / 441FT²

8.06
2 BEDROOM / 1 BATHROOM
Total Apartment Area 63M² / 678FT²

8.03
2 BEDROOM / 2 BATHROOM / STUDY
Total Apartment Area 79M² / 850FT²

8.04
2 BEDROOM / 2 BATHROOM / STUDY
Total Apartment Area 103M² / 1109FT²

8.05
2 BEDROOM / 1 BATHROOM / STUDY
Total Apartment Area 79M² / 850FT²



DUDLEY STREET
(CITY FACING)

Not to scale.
All dimensions are approximate.
Floorboard upgrade shown. All internal/external
furniture (including study desks and planter boxes)
and whitegoods are not included.
** Privacy Screening – refer to contract of sale.

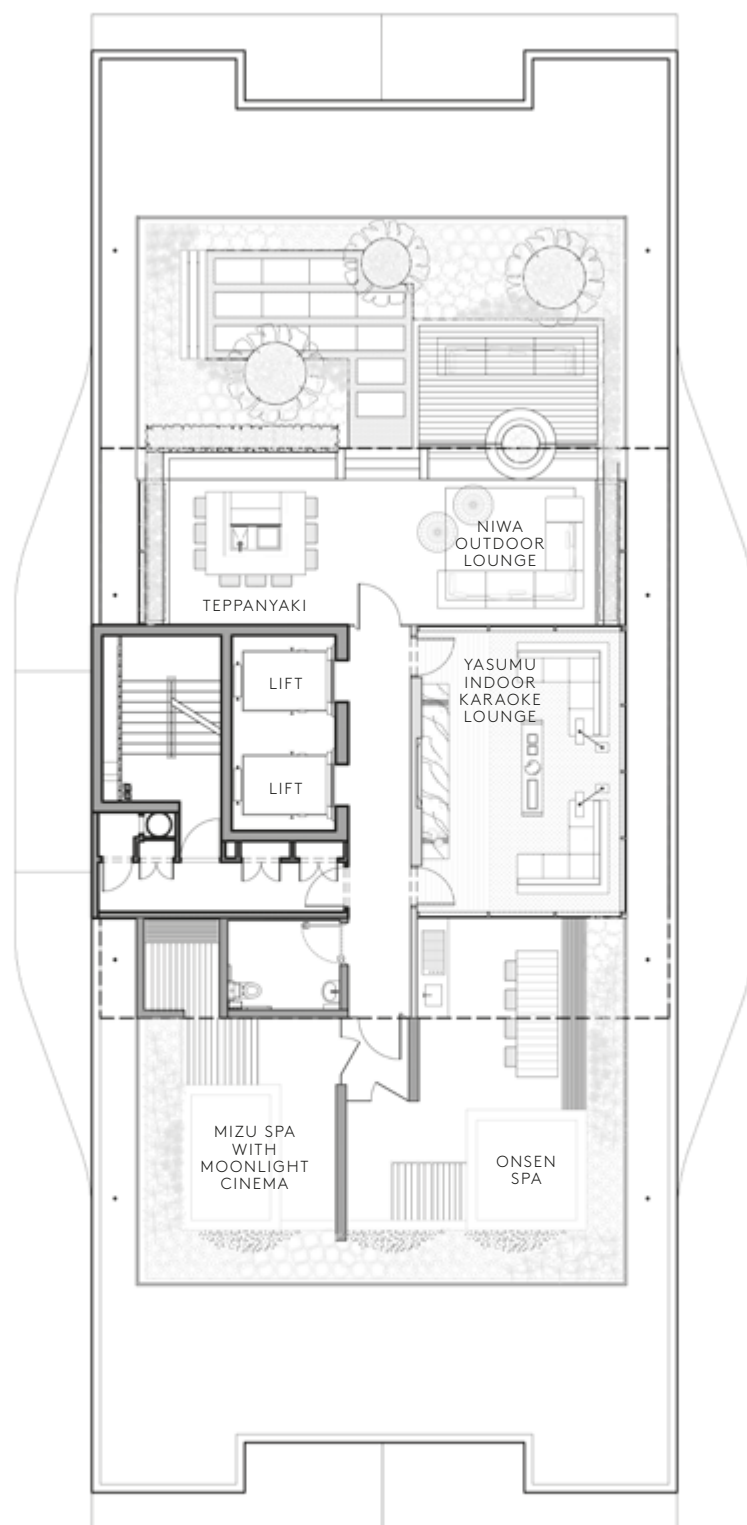
DISCLAIMER
Any dimensions, layout, design features, views, areas, images, photographs
and artist's impressions are for presentation purposes and indicative only.
They are also subject to change in accordance with the contract of sale.
All area calculations are based on the Property Council of Australia method
of measurement guidelines and are estimates only. Any dimensions or areas
may differ from surveyed areas due to different methods of measurement.
Final product may differ from that described. Purchasers should check the
plans and specifications included in the contract of sale carefully prior to
signing the contract of sale.

Level Nine

I K E B A N A

K E S H I

(NORTH FACING)



DUDLEY STREET
(CITY FACING)

Not to scale.
All dimensions are approximate.
Floorboard upgrade shown. All internal/external
furniture (including study desks and planter boxes)
and whitegoods are not included.
** Privacy Screening – refer to contract of sale.

DISCLAIMER

Any dimensions, layout, design features, views, areas, images, photographs
and artist's impressions are for presentation purposes and indicative only.
They are also subject to change in accordance with the contract of sale.
All area calculations are based on the Property Council of Australia method
of measurement guidelines and are estimates only. Any dimensions or areas
may differ from surveyed areas due to different methods of measurement.
Final product may differ from that described. Purchasers should check the
plans and specifications included in the contract of sale carefully prior to
signing the contract of sale.