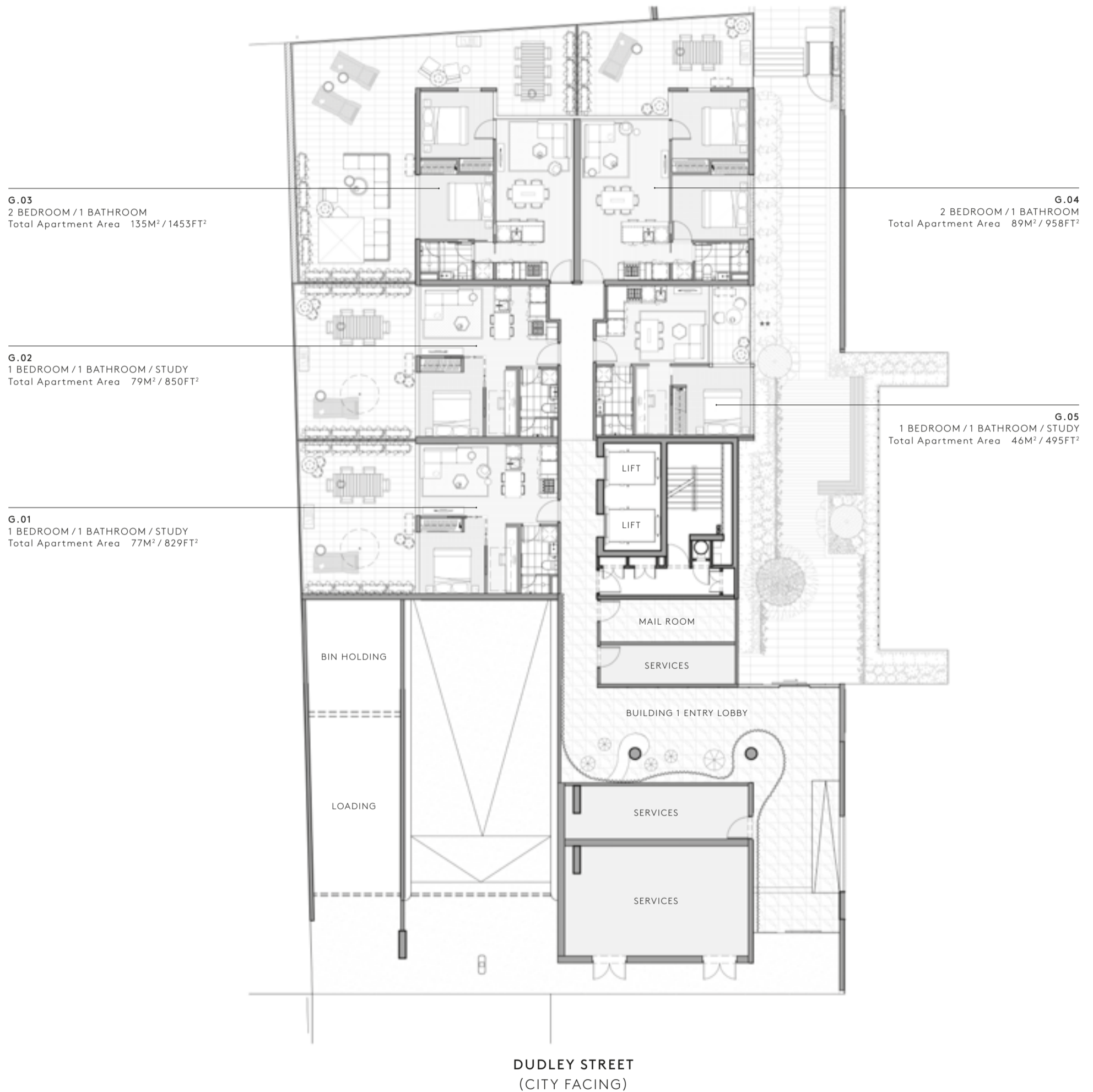


# Ground Level

I K E B A N A

## SAKURA

(NORTH FACING)



Not to scale.  
All dimensions are approximate.  
Floorboard upgrade shown. All internal/external furniture (including study desks and planter boxes) and whitegoods are not included.  
\*\* Privacy Screening – refer to contract of sale.

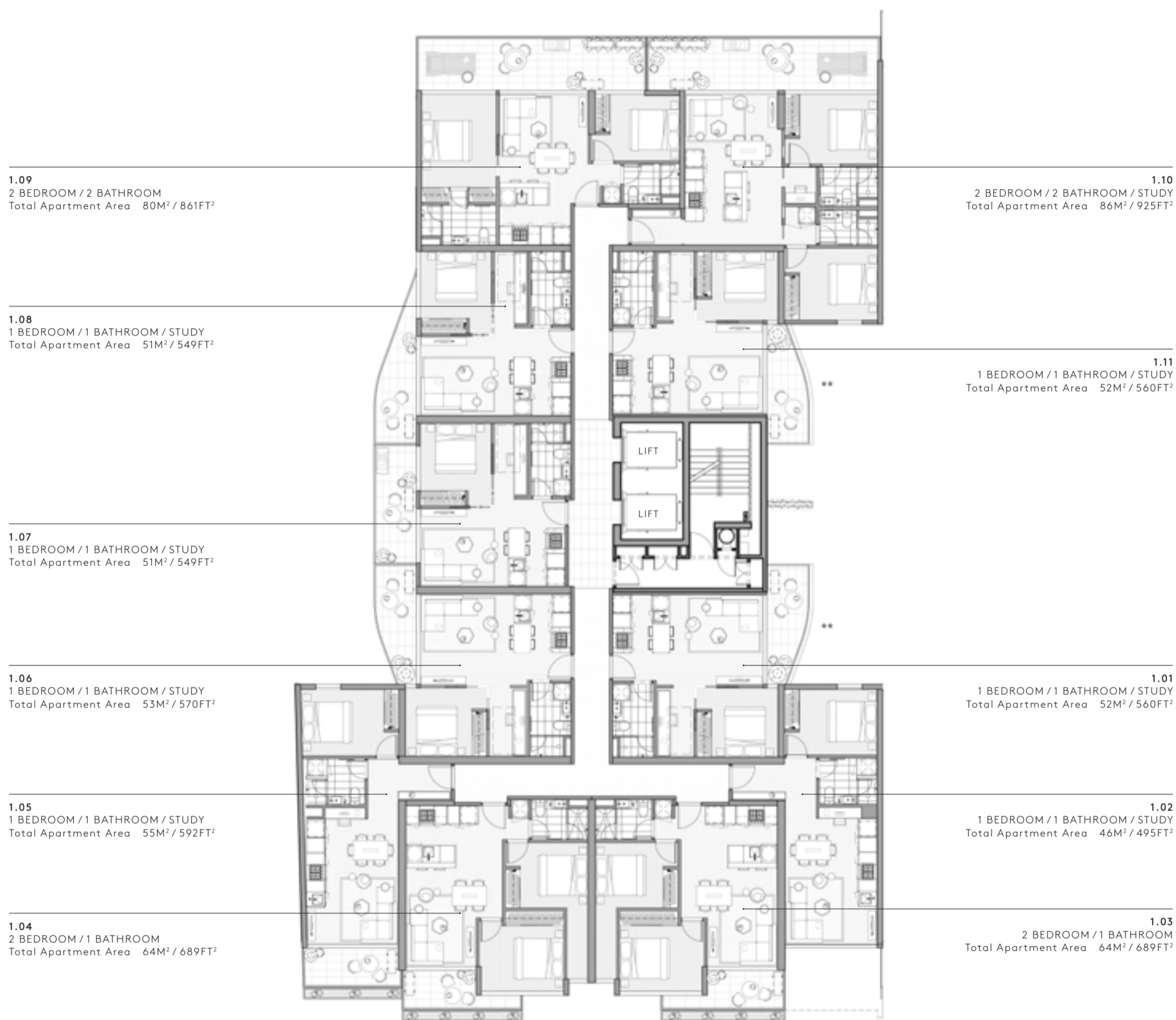
**DISCLAIMER**  
Any dimensions, layout, design features, views, areas, images, photographs and artist's impressions are for presentation purposes and indicative only. They are also subject to change in accordance with the contract of sale. All area calculations are based on the Property Council of Australia method of measurement guidelines and are estimates only. Any dimensions or areas may differ from surveyed areas due to different methods of measurement. Final product may differ from that described. Purchasers should check the plans and specifications included in the contract of sale carefully prior to signing the contract of sale.

# Level One

I K E B A N A

## SAKURA

(NORTH FACING)



DUDLEY STREET  
(CITY FACING)

Not to scale.  
All dimensions are approximate.  
Floorboard upgrade shown. All internal/external furniture (including study desks and planter boxes) and whitegoods are not included.  
\*\* Privacy Screening – refer to contract of sale.

### DISCLAIMER

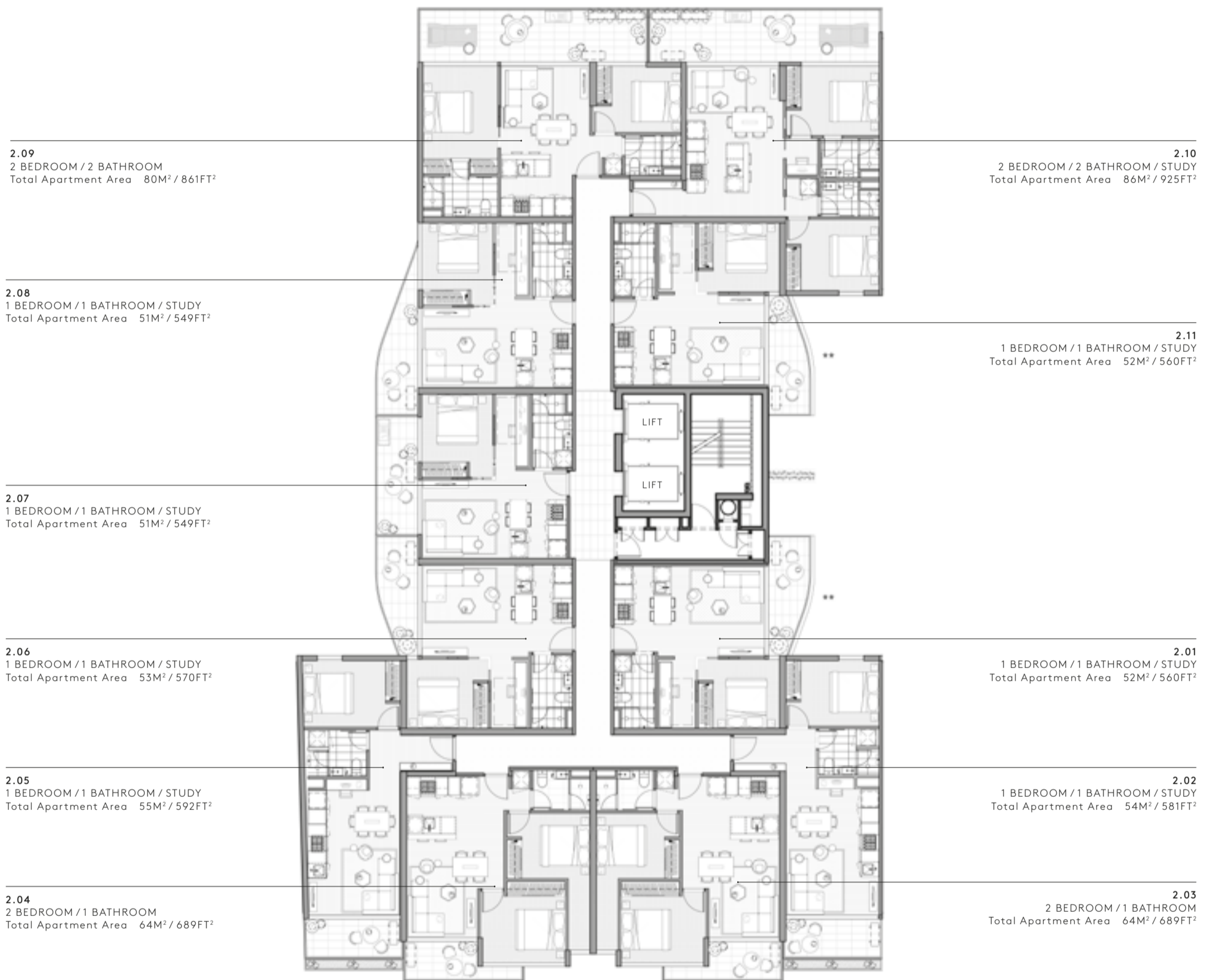
Any dimensions, layout, design features, views, areas, images, photographs and artist's impressions are for presentation purposes and indicative only. They are also subject to change in accordance with the contract of sale. All area calculations are based on the Property Council of Australia method of measurement guidelines and are estimates only. Any dimensions or areas may differ from surveyed areas due to different methods of measurement. Final product may differ from that described. Purchasers should check the plans and specifications included in the contract of sale carefully prior to signing the contract of sale.

# Level Two

IKEBANA

## SAKURA

(NORTH FACING)



DUDLEY STREET  
(CITY FACING)

Not to scale.  
All dimensions are approximate.  
Floorboard upgrade shown. All internal/external furniture (including study desks and planter boxes) and whitegoods are not included.  
\*\* Privacy Screening – refer to contract of sale.

### DISCLAIMER

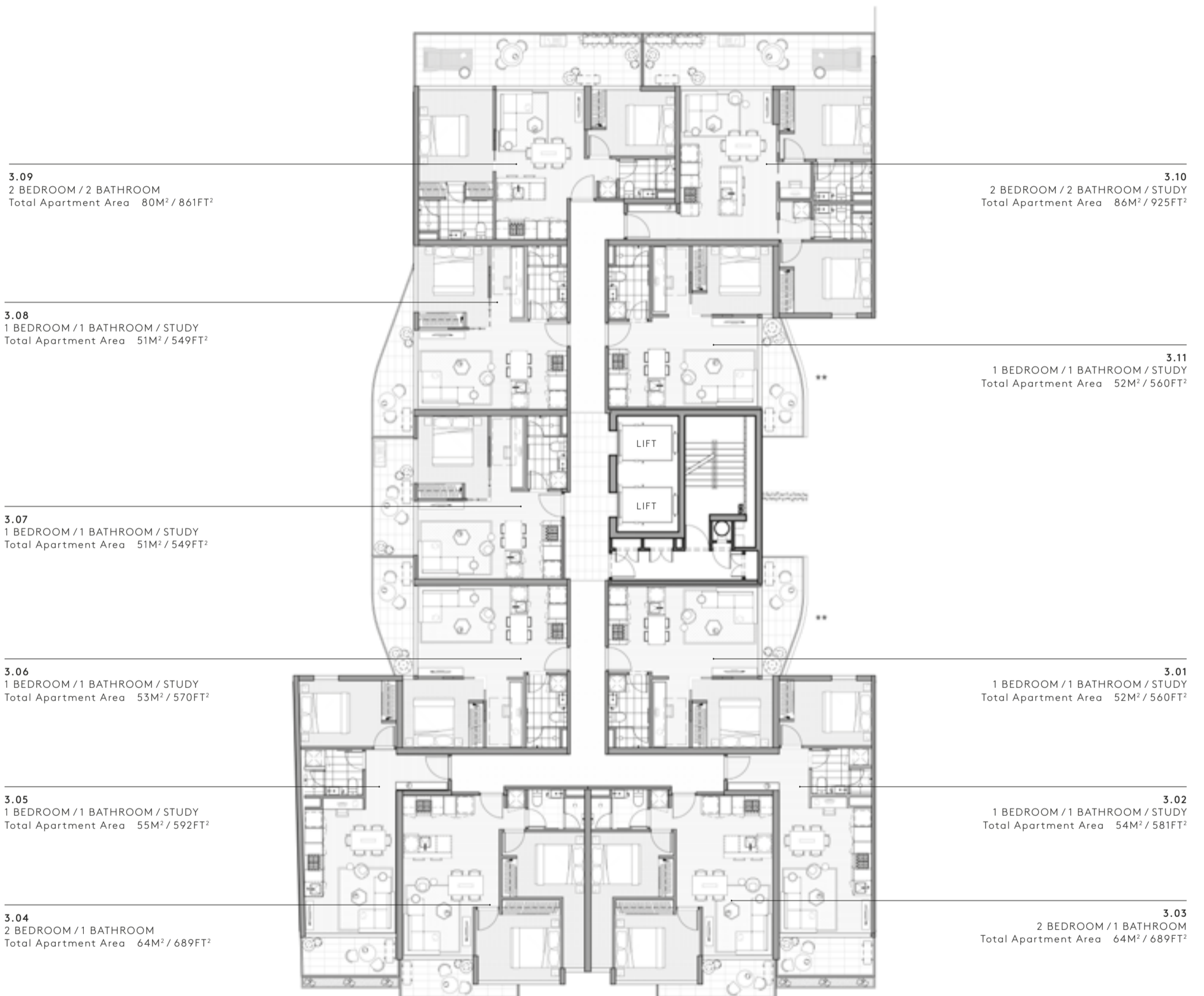
Any dimensions, layout, design features, views, areas, images, photographs and artist's impressions are for presentation purposes and indicative only. They are also subject to change in accordance with the contract of sale. All area calculations are based on the Property Council of Australia method of measurement guidelines and are estimates only. Any dimensions or areas may differ from surveyed areas due to different methods of measurement. Final product may differ from that described. Purchasers should check the plans and specifications included in the contract of sale carefully prior to signing the contract of sale.

# Level Three

IKEBANA

## SAKURA

(NORTH FACING)



DUDLEY STREET  
(CITY FACING)

Not to scale.  
All dimensions are approximate.  
Floorboard upgrade shown. All internal/external  
furniture (including study desks and planter boxes)  
and whitegoods are not included.  
\*\* Privacy Screening – refer to contract of sale.

### DISCLAIMER

Any dimensions, layout, design features, views, areas, images, photographs  
and artist's impressions are for presentation purposes and indicative only.  
They are also subject to change in accordance with the contract of sale.  
All area calculations are based on the Property Council of Australia method  
of measurement guidelines and are estimates only. Any dimensions or areas  
may differ from surveyed areas due to different methods of measurement.  
Final product may differ from that described. Purchasers should check the  
plans and specifications included in the contract of sale carefully prior to  
signing the contract of sale.

# Level Four

I K E B A N A

## SAKURA

(NORTH FACING)

**4.06**  
2 BEDROOM / 1 BATHROOM  
Total Apartment Area 70M<sup>2</sup> / 753FT<sup>2</sup>

**4.07**  
1 BEDROOM / 1 BATHROOM / STUDY  
Total Apartment Area 68M<sup>2</sup> / 732FT<sup>2</sup>

**4.05**  
2 BEDROOM / 1 BATHROOM / STUDY  
Total Apartment Area 66M<sup>2</sup> / 710FT<sup>2</sup>

**4.08**  
1 BEDROOM / 1 BATHROOM / STUDY  
Total Apartment Area 49M<sup>2</sup> / 527FT<sup>2</sup>

**4.04**  
2 BEDROOM / 1 BATHROOM / STUDY  
Total Apartment Area 67M<sup>2</sup> / 721FT<sup>2</sup>

**4.01**  
STUDIO / 1 BATHROOM  
Total Apartment Area 41M<sup>2</sup> / 441FT<sup>2</sup>

**4.03**  
2 BEDROOM / 1 BATHROOM  
Total Apartment Area 82M<sup>2</sup> / 883FT<sup>2</sup>

**4.02**  
2 BEDROOM / 1 BATHROOM  
Total Apartment Area 87M<sup>2</sup> / 936FT<sup>2</sup>



DUDLEY STREET  
(CITY FACING)

Not to scale.  
All dimensions are approximate.  
Floorboard upgrade shown. All internal/external  
furniture (including study desks and planter boxes)  
and whitegoods are not included.  
\*\* Privacy Screening – refer to contract of sale.

### DISCLAIMER

Any dimensions, layout, design features, views, areas, images, photographs and artist's impressions are for presentation purposes and indicative only. They are also subject to change in accordance with the contract of sale. All area calculations are based on the Property Council of Australia method of measurement guidelines and are estimates only. Any dimensions or areas may differ from surveyed areas due to different methods of measurement. Final product may differ from that described. Purchasers should check the plans and specifications included in the contract of sale carefully prior to signing the contract of sale.

# Level Five

I K E B A N A

## SAKURA

(NORTH FACING)

5.06  
2 BEDROOM / 1 BATHROOM  
Total Apartment Area 63M<sup>2</sup> / 678FT<sup>2</sup>

5.07  
1 BEDROOM / 1 BATHROOM / STUDY  
Total Apartment Area 54M<sup>2</sup> / 581FT<sup>2</sup>

5.05  
2 BEDROOM / 1 BATHROOM / STUDY  
Total Apartment Area 66M<sup>2</sup> / 710FT<sup>2</sup>

5.08  
1 BEDROOM / 1 BATHROOM / STUDY  
Total Apartment Area 49M<sup>2</sup> / 527FT<sup>2</sup>

5.04  
2 BEDROOM / 1 BATHROOM / STUDY  
Total Apartment Area 67M<sup>2</sup> / 721FT<sup>2</sup>

5.01  
STUDIO / 1 BATHROOM  
Total Apartment Area 41M<sup>2</sup> / 441FT<sup>2</sup>

5.03  
2 BEDROOM / 1 BATHROOM  
Total Apartment Area 63M<sup>2</sup> / 678FT<sup>2</sup>

5.02  
2 BEDROOM / 1 BATHROOM  
Total Apartment Area 63M<sup>2</sup> / 678FT<sup>2</sup>



DUDLEY STREET  
(CITY FACING)

Not to scale.  
All dimensions are approximate.  
Floorboard upgrade shown. All internal/external  
furniture (including study desks and planter boxes)  
and whitegoods are not included.  
\*\* Privacy Screening – refer to contract of sale.

### DISCLAIMER

Any dimensions, layout, design features, views, areas, images, photographs  
and artist's impressions are for presentation purposes and indicative only.  
They are also subject to change in accordance with the contract of sale.  
All area calculations are based on the Property Council of Australia method  
of measurement guidelines and are estimates only. Any dimensions or areas  
may differ from surveyed areas due to different methods of measurement.  
Final product may differ from that described. Purchasers should check the  
plans and specifications included in the contract of sale carefully prior to  
signing the contract of sale.

# Level Six

I K E B A N A

## SAKURA

(NORTH FACING)

6.06  
2 BEDROOM / 1 BATHROOM  
Total Apartment Area 63M<sup>2</sup> / 678FT<sup>2</sup>

6.07  
1 BEDROOM / 1 BATHROOM / STUDY  
Total Apartment Area 54M<sup>2</sup> / 581FT<sup>2</sup>

6.05  
2 BEDROOM / 1 BATHROOM / STUDY  
Total Apartment Area 66M<sup>2</sup> / 710FT<sup>2</sup>

6.08  
1 BEDROOM / 1 BATHROOM / STUDY  
Total Apartment Area 49M<sup>2</sup> / 527FT<sup>2</sup>

6.04  
2 BEDROOM / 1 BATHROOM / STUDY  
Total Apartment Area 67M<sup>2</sup> / 721FT<sup>2</sup>

6.01  
STUDIO / 1 BATHROOM  
Total Apartment Area 41M<sup>2</sup> / 441FT<sup>2</sup>

6.03  
2 BEDROOM / 1 BATHROOM  
Total Apartment Area 63M<sup>2</sup> / 678FT<sup>2</sup>

6.02  
2 BEDROOM / 1 BATHROOM  
Total Apartment Area 63M<sup>2</sup> / 678FT<sup>2</sup>



DUDLEY STREET  
(CITY FACING)

Not to scale.  
All dimensions are approximate.  
Floorboard upgrade shown. All internal/external  
furniture (including study desks and planter boxes)  
and whitegoods are not included.  
\*\* Privacy Screening – refer to contract of sale.

### DISCLAIMER

Any dimensions, layout, design features, views, areas, images, photographs  
and artist's impressions are for presentation purposes and indicative only.  
They are also subject to change in accordance with the contract of sale.  
All area calculations are based on the Property Council of Australia method  
of measurement guidelines and are estimates only. Any dimensions or areas  
may differ from surveyed areas due to different methods of measurement.  
Final product may differ from that described. Purchasers should check the  
plans and specifications included in the contract of sale carefully prior to  
signing the contract of sale.

# Level Seven

I K E B A N A

## SAKURA

(NORTH FACING)

7.05  
2 BEDROOM / 2 BATHROOM / STUDY  
Total Apartment Area 79M<sup>2</sup> / 850FT<sup>2</sup>

7.06  
1 BEDROOM / 1 BATHROOM / STUDY  
Total Apartment Area 54M<sup>2</sup> / 581FT<sup>2</sup>

7.07  
1 BEDROOM / 1 BATHROOM / STUDY  
Total Apartment Area 49M<sup>2</sup> / 527FT<sup>2</sup>

7.04  
2 BEDROOM / 2 BATHROOM / STUDY  
Total Apartment Area 103M<sup>2</sup> / 1109FT<sup>2</sup>

7.01  
STUDIO / 1 BATHROOM  
Total Apartment Area 41M<sup>2</sup> / 441FT<sup>2</sup>

7.02  
2 BEDROOM / 1 BATHROOM  
Total Apartment Area 63M<sup>2</sup> / 678FT<sup>2</sup>



DUDLEY STREET  
(CITY FACING)

Not to scale.  
All dimensions are approximate.  
Floorboard upgrade shown. All internal/external  
furniture (including study desks and planter boxes)  
and whitegoods are not included.  
\*\* Privacy Screening – refer to contract of sale.

### DISCLAIMER

Any dimensions, layout, design features, views, areas, images, photographs  
and artist's impressions are for presentation purposes and indicative only.  
They are also subject to change in accordance with the contract of sale.  
All area calculations are based on the Property Council of Australia method  
of measurement guidelines and are estimates only. Any dimensions or areas  
may differ from surveyed areas due to different methods of measurement.  
Final product may differ from that described. Purchasers should check the  
plans and specifications included in the contract of sale carefully prior to  
signing the contract of sale.